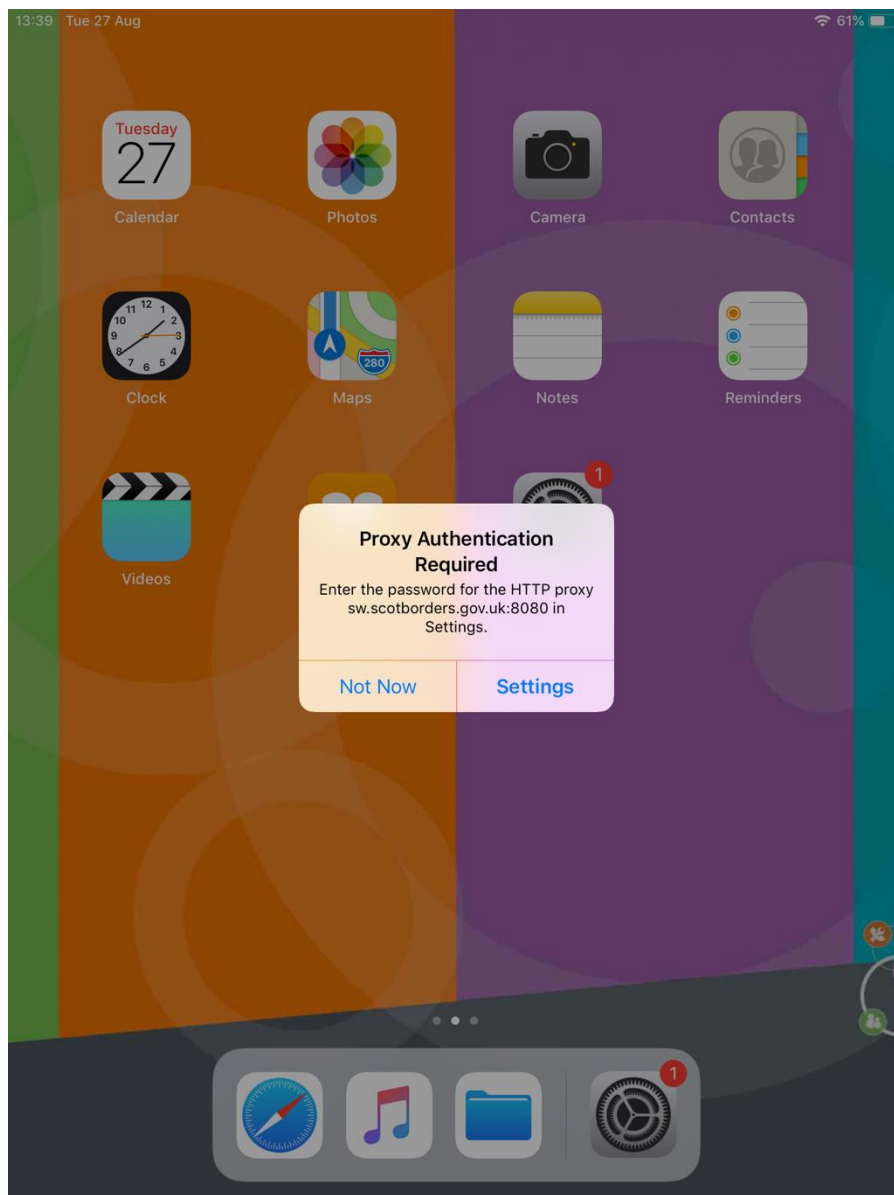


Three Steps to get back on the internet!

Step 1).

When you get the below popup select 'Settings'.



Step 2).

You will then see this dialog box, enter your username and password in the following format.

NOTE: depending on which school you are in will depend on which number you put after 'cluster'.

Cluster 1 = Gala Academy

Cluster 2 = Selkirk HS

Cluster 3 = Jed Gram and Kelso HS

Cluster 4 = Berwickshire and Eyemouth HS

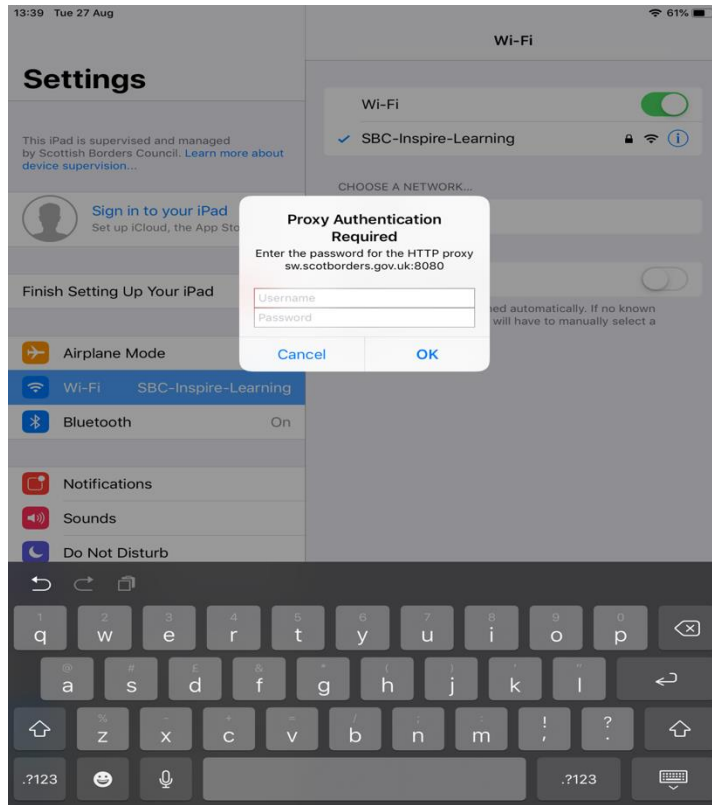
Cluster 5 = Hawick HS

Cluster 6 = Peebles HS

Cluster 7 = Earlston HS

Username: cluster'x'\ "RMusername"

Password: "yourRMpassword"



Step 3).

Your box should look something like the below screenshot. Once you are happy with your credentials select 'OK' and then try browsing to the internet.

